

## Appendix 1: Sensitivity analyses and ERGM results

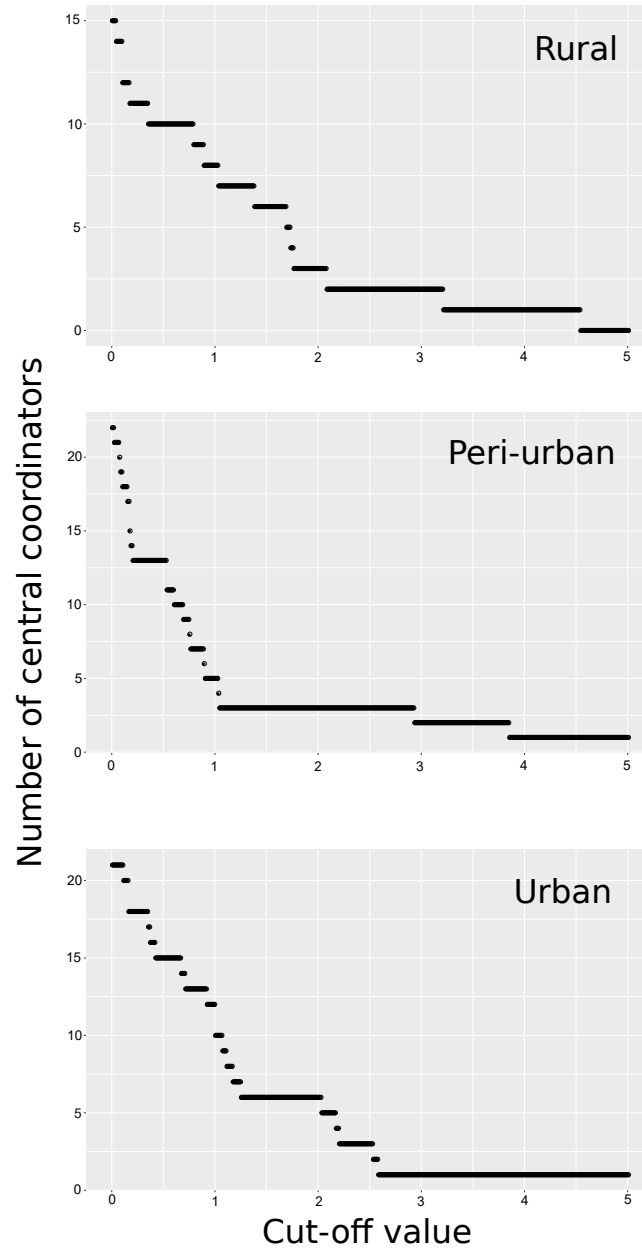


Figure A1.1: Sensitivity analyses for number of central coordinators depending on variation in cut-off values (standard deviations above mean ego betweenness score) for rural, peri-urban, and urban region

	Model 1
Edges	-3.25* [-4.55; -2.57]
Geometrically weighted ( $\alpha = 0.5$ ) edgewise shared partners	1.60* [1.34; 2.27]
Geometrically weighted ( $\alpha = 1.2$ ) degree	-6.87* [-7.85; -5.80]
Geometrically weighted ( $\alpha = 0.1$ ) dyad-wise shared partners	-0.10* [-0.10; -0.09]
isolates	-27.42* [-31.52; -28.42]
State level activity	0.38* [0.10; 0.61]
Regional level activity	0.40* [0.23; 0.48]
Local level activity	0.00 [-0.10; 0.09]
Level homophily	0.04 [-0.02; 0.19]

\* 0 outside the confidence interval

Table A1.1: Coefficients of pooled exponential random graph model used to generate baseline distributions in permutational analysis. Confidence intervals in square brackets

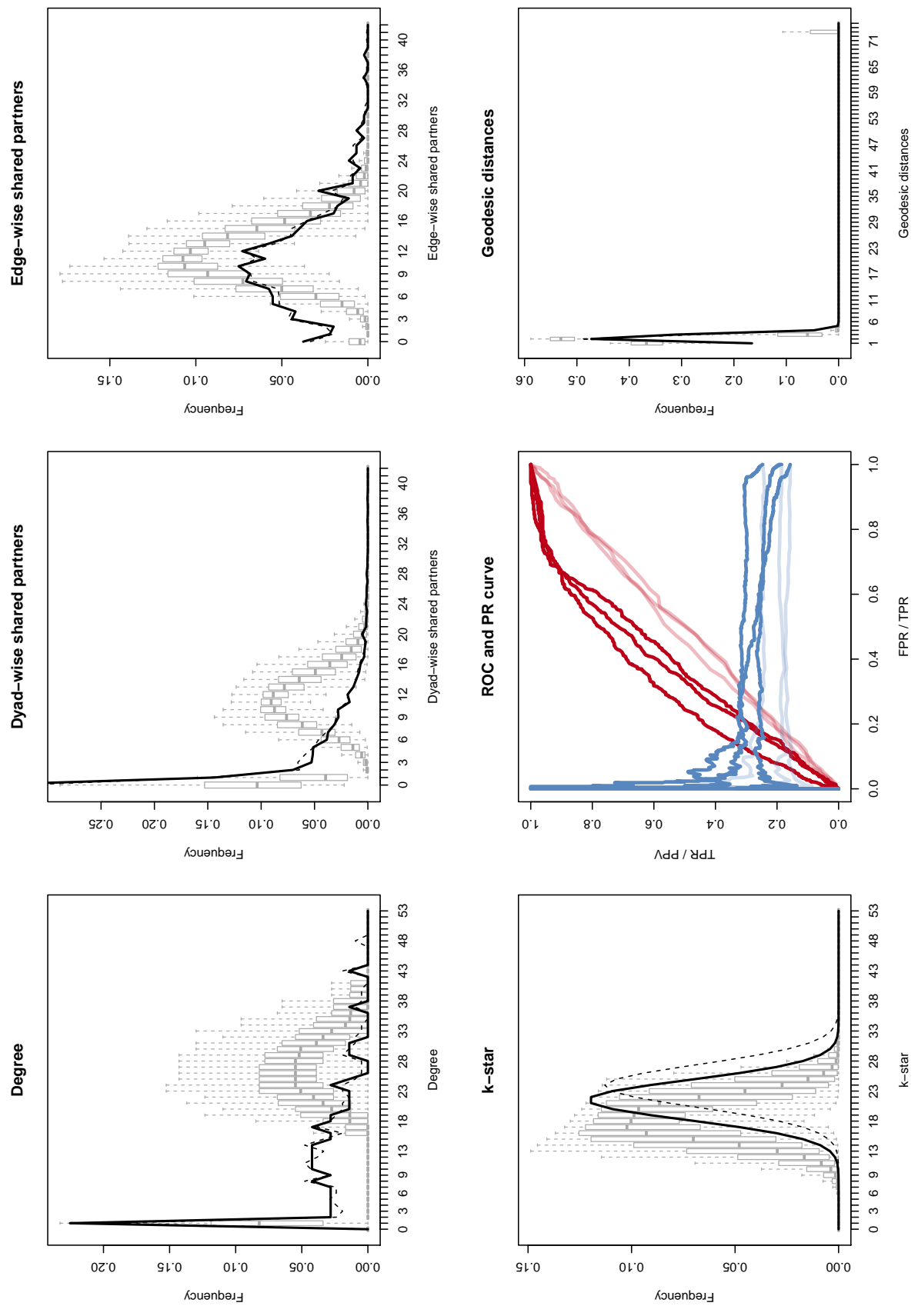


Figure A1.2: Goodness of fit plots for pooled ERGM based on 1000 simulated networks