

APPENDIX 5

Gini-coefficients for investment and extraction

Figure A5.1. Average group Gini-coefficient for investment and extraction over experiment rounds

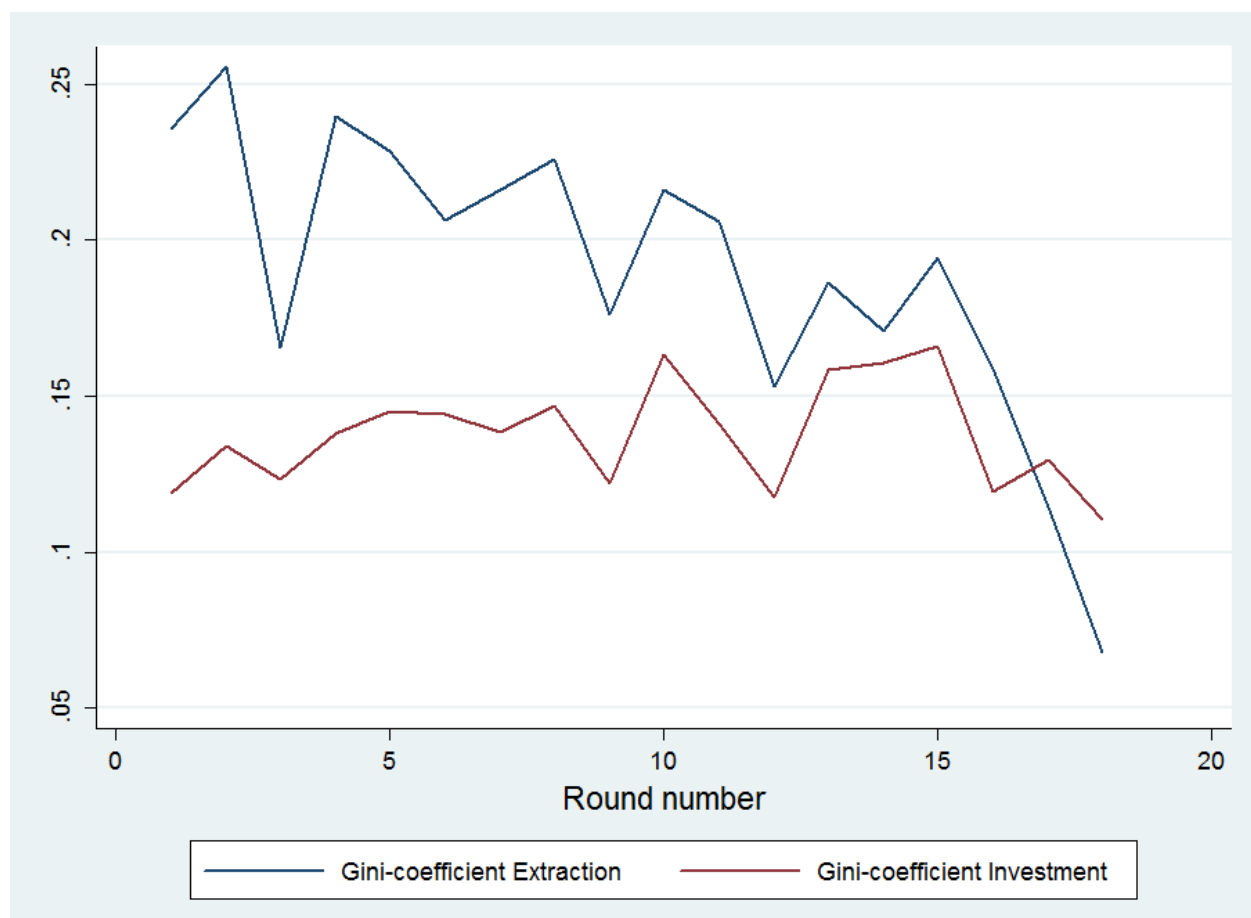


Table A5.1. Mixed effects regression models explaining Gini-coefficients of extraction (coefficients with standard errors in parentheses; * $p < 0.1$, ** $p < 0.05$, *** $p < 0.01$).

	Gini-coeff. investment	Gini-coeff. earnings	Gini-coeff. extraction
Group variables			
σ age	0.000897 (0.00137)	0.00424** (0.00166)	0.00250 (0.00309)
σ size land holding	0.00336*** (0.000871)	0.00188* (0.00107)	0.00205 (0.00125)
σ education level	-0.0131 (0.0115)	-0.0315** (0.0146)	-0.00214 (0.0231)
No. of casts in group	-0.00131 (0.0147)	0.00116 (0.0147)	0.0207 (0.0171)
Network density of social relations	-0.0806*** (0.0306)	0.0485* (0.0279)	0.0489 (0.0387)
Village variables			

No. of households	0.000112* (0.0000667)	0.000176*** (0.0000484)	0.000225** (0.000101)
Head- or tail-end location	-0.0177 (0.0173)	-0.0620*** (0.0159)	-0.0511*** (0.0181)
Distance to market	-0.000632 (0.00176)	0.000812 (0.00163)	0.00210 (0.00140)
Frequency of water disputes	0.000294 (0.00869)	0.0111 (0.00980)	0.00465 (0.0118)
Game variables			
Round number	0.00144 (0.00151)	-0.00291* (0.00168)	-0.00555** (0.00272)
Interaction C & treatment phase	-0.0182 (0.0320)	-0.0549 (0.0345)	-0.0354 (0.0400)
Interaction TA & treatment phase	-0.0215 (0.0213)	0.0113 (0.0198)	0.0146 (0.0453)
Interaction P & treatment phase	0.0271 (0.0408)	0.00883 (0.0328)	0.0232 (0.0466)
Interaction IC & treatment phase	0.00517 (0.0241)	0.00610 (0.0309)	0.0366 (0.0617)
constant	0.117 (0.0775)	0.125** (0.0543)	0.0520 (0.0736)
Random-effects Parameters			
Village	-4.243*** (0.559)	-4.258*** (0.663)	-4.526** (2.144)
Residual	-2.330*** (0.0921)	-2.193*** (0.0536)	-1.775*** (0.0735)
<i>No. of Groups</i>	32	32	32
<i>N of Observations</i>	514	514	514